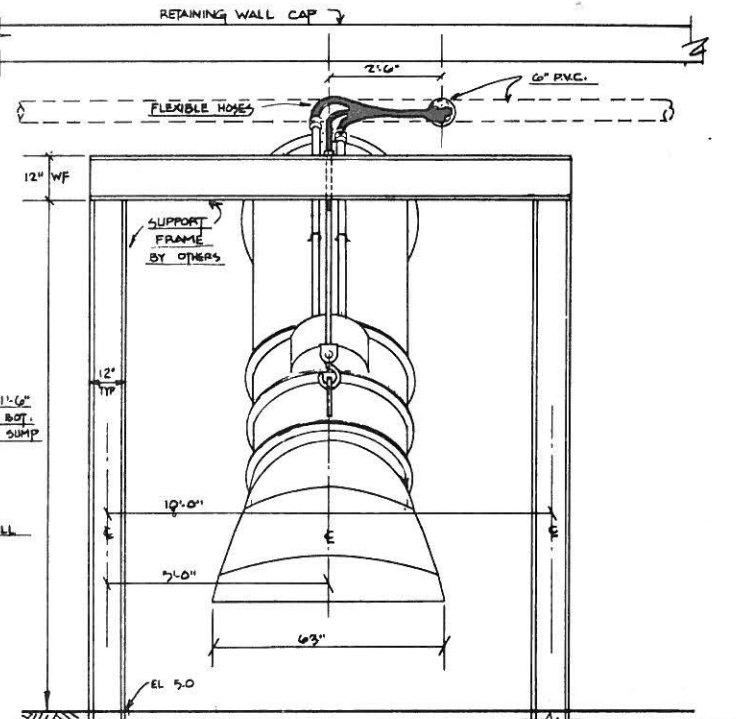
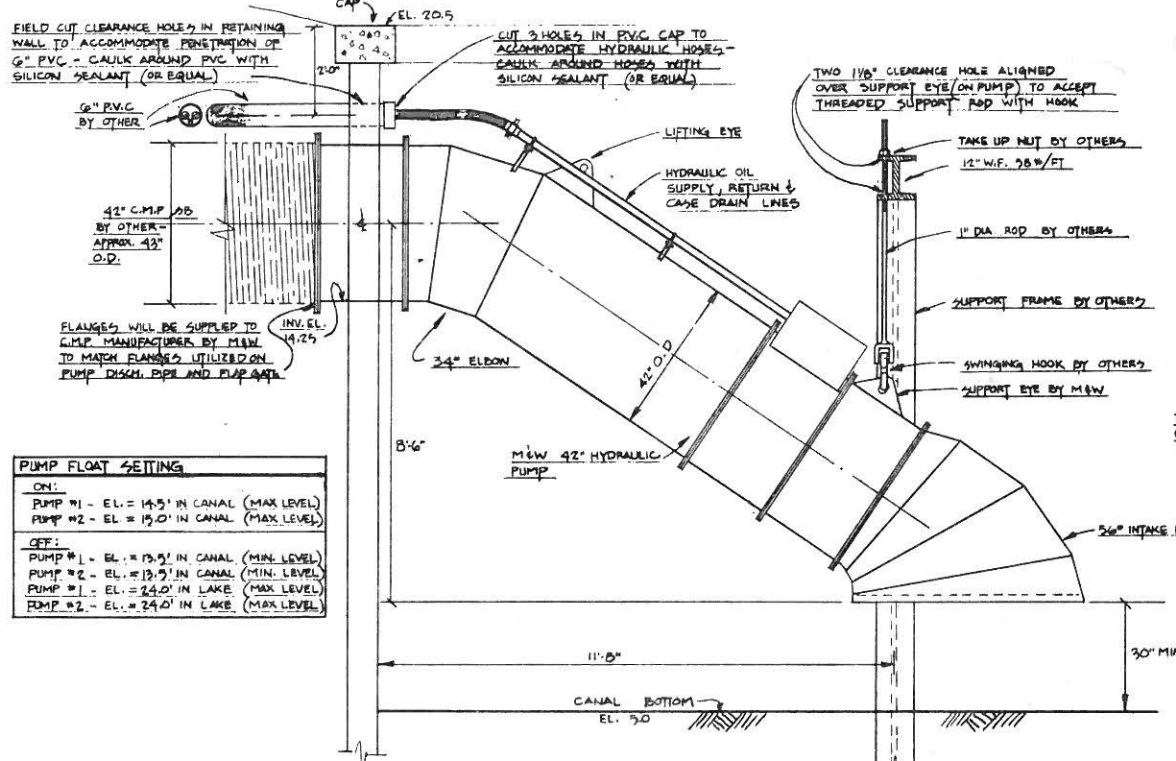
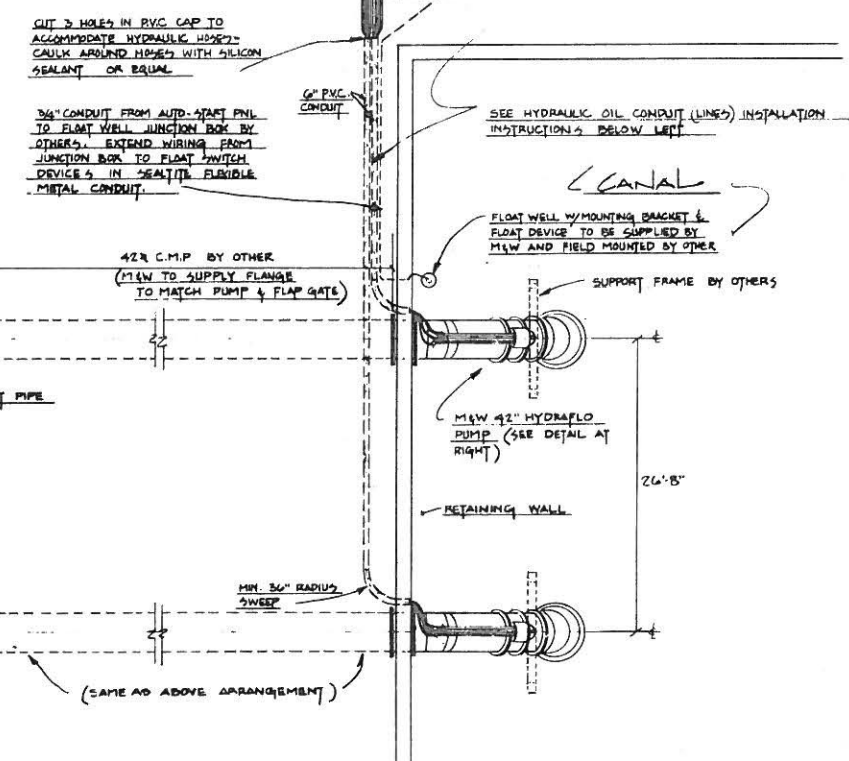
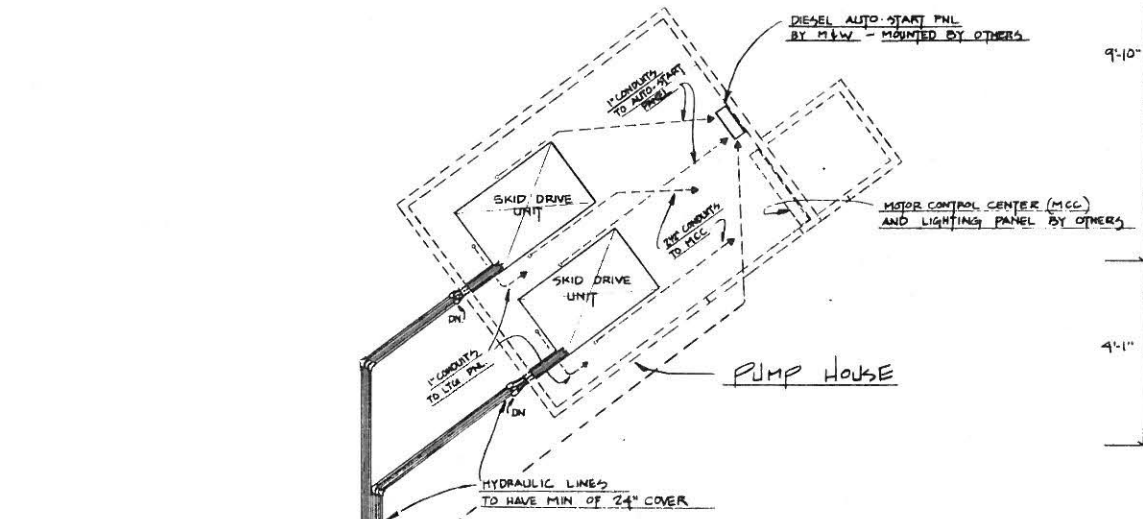
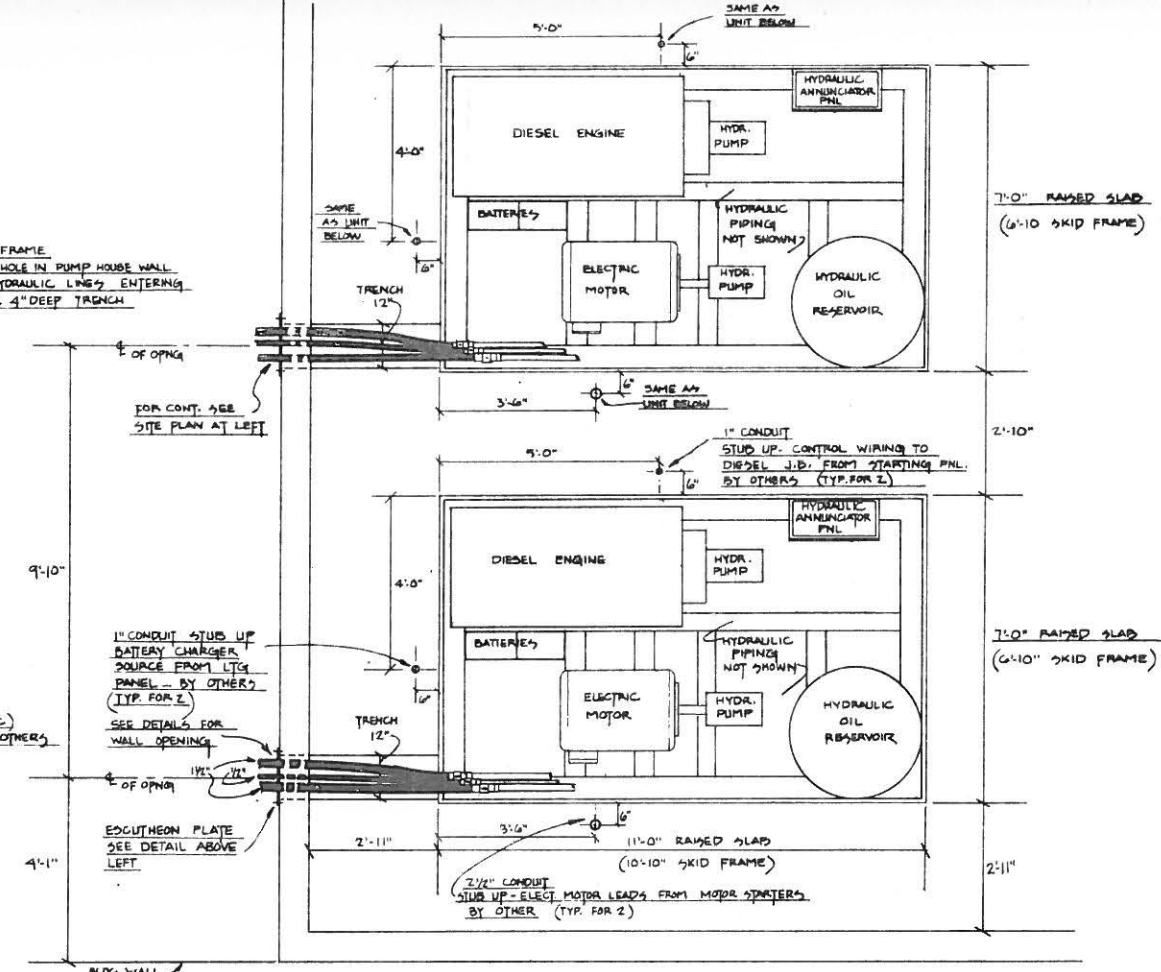
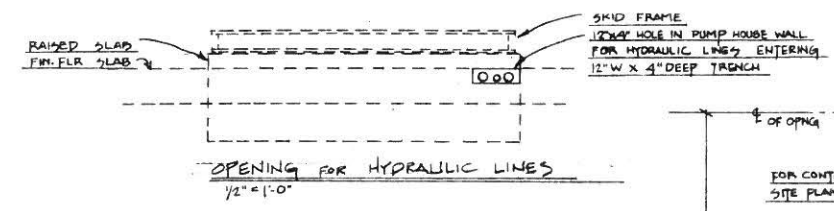
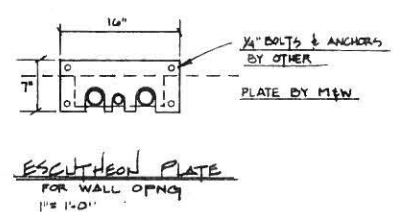


BY	DATE	DESCRIPTION	APP'D



PUMP FLOAT SETTING

ON:	PUMP #1 - EL. = 14.5' IN CANAL (MAX. LEVEL)
	PUMP #2 - EL. = 19.0' IN CANAL (MAX. LEVEL)
OFF:	PUMP #1 - EL. = 13.5' IN CANAL (MIN. LEVEL)
	PUMP #2 - EL. = 18.0' IN CANAL (MIN. LEVEL)
	PUMP #1 - EL. = 24.0' IN LAKE (MAX. LEVEL)
	PUMP #2 - EL. = 24.0' IN LAKE (MAX. LEVEL)

HYDRAULIC OIL CONDUIT INSTALLATION INSTRUCTIONS:
 M&W WILL SUPPLY HYDRAULIC OIL CONDUITS IN STANDARD NOMINAL LENGTHS (20' APPROX.), THREADED EACH END WITH COUPLINGS, CLEANED AND CHECKED AT FACTORY AND SHIPPED WITH TAPED ENDS. M&W WILL ALSO SUPPLY MOUNTING BRACKET. CONTRACTOR TO INSTALL PIPES FROM PUMPS TO DRIVE UNIT.
 CAUTION: FIELD FABRICATED PIPES TO BE CAREFULLY CLEANED AFTER ANY CUTTING OR THREADING AND INSPECTED BY ENGINEER, OWNER OR PUMP MANUFACTURER REPRESENTATIVE PRIOR TO INSTALLATION.

NOTE: THIS DRAWING IS THE PROPERTY OF M&W PUMP WORKS, INC., 33 N.W. 2nd ST., DEERFIELD BEACH, FL 33441 AND IS LOANED WITH THE EXPRESS UNDERSTANDING THAT IT IS SUBJECT TO RETURN ON DEMAND. THE ENGINEERING KNOW-HOW AND DESIGN INFORMATION HEREON ARE INCLUDED IN THE PRICE OF OUR PROPOSAL AND MAY NOT BE REPRODUCED, USED OR TRANSMITTED TO OTHERS EXCEPT IN ACCORD WITH CONTRACT OR WRITTEN PERMISSION OF M&W PUMP WORKS, INC.
 MODEL NO. HAC 42
 CUSTOMER
 JOB
 CUSTOMER APPROVAL
 SIGNATURE DATE

ITEM	PART NUMBER	DESCRIPTION	QUANTITY
PARTS LIST			
TITLE: PUMPING EQUIPMENT INSTALLATION DETAIL			
DWG. NO. FIS 4234(2) SK SHEET 1 OF 1			
SCALE: AS NOTED	DATE: 12/9	DATE: 12/77	DATE: 12/77

M&W PUMP WORKS, INC. 33 N.W. 2nd ST. DEERFIELD BEACH, FL 33441