

INSPECTIONS: BOXED
 ** See above for additional inspections required

Weight: 4169 lb. / 1895 Kg.

Notes:
 1. Notes 2, 3, inspections and tolerances are applicable only to production drawings.
 2. Break / De-burr all sharp edges and corners.
 3. Stamp Component Tracking Number in the location shown. xx-YYYYYY
 xx: Sequential Tracking Number.
 YYYYYY: 6 digit P.O. Numbers.
 ** See above for additional notes.

THIRD-ANGLE PROJECTION

Scale: NTS
 Sheet Size: B

Unless otherwise specified tolerances are:

For inch dimensions tolerances are as follows
 Decimal
 .X ± 0.06 in.
 .XX ± 0.03
 .XXX ± 0.010
 .XXXX ± 0.001
 Fractional ± 1/16
 Machined surface finish: 125 ✓

For metric dimensions tolerances are as follows
 X. ± 1.5 mm
 .X ± 0.8
 .XX ± 0.25
 .XXX ± 0.025
 Machined surface finish: 32 ✓

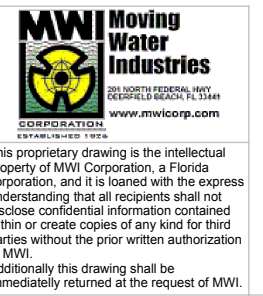
Title: SEA330 ASSEMBLY DRAWING
 Project: SFWMD

Drawn by: JC 4/15/10
 Job No.: 10040A

Checked by: MC 10/12/10
 Initials:

Rev A ECR 3455

Drawing No: SEA330-10040A
 Sheet: 1 of 1



ITEM #	DESCRIPTION	MWI PART # DRAWING #	QTY.
131			
130	GASKET	CPC3036SEV	1
126	OIL SEAL	E28945	1
125	OIL SEAL	E27500	1
123	O-RING# AS383	E06400	1
122	O-RING# AS386	E06430	1
121	O-RING# AS389	E06490	1
120	O-RING# AS381	E06360	1
112			
111	1/4"-20 x 1-1/2 FHSC	BB72312	18
110	1/4" FLAT WASHER	BB21802	36
109	1/4" NUT	BB13002	18
108	Plug, Hex	SS46000	3
107			
106			
105	1/4"-20 x 1 1/4" HHCS	BB00401	8
104	5/16"-18 x 3/4" SHCS	BB16736	14
103	3/8"-16 x 1 1/4" HHCS	BB01600	16
102	7/16"-14 x 1 1/4" HHCS	BB02202	16
101	1/2"-13 x 1 3/4" HHCS	BB03102	20
ITEM #	DESCRIPTION	MWI PART # DRAWING #	QTY.

BILL OF MATERIALS

ITEM #	DESCRIPTION	MWI PART # DRAWING #	QTY.
21	BEARING NUT	BB25301	1
20	BEARING WASHER	BB24501	1
19	WAVE SPRING	E21500	1
18	MOTOR	AC10040A01	1
17	RETAINER RING	E16905	1
16	MECHANICAL SEAL	E14700	2
15	BEARINGS - UPPER 6315	J25500	1
14	BEARINGS - LOWER 7322	J63000	2
13	MOISTURE PROBE	I22300	1
12	PROPELLER NUT	AGNTI2E3R	1
11	PROPELLER	A023301155R	1
10	LID ASSEMBLY	AS041901C	1
9	LIFTING LOOP	AS161900C	1
8	JUNCTION BOX	AS031900C	1
7	MOTOR HOUSING	AS021820C	1
6	BEARING RETAINER	AS7322A	1
5	BEARING BOX	AS113019CL	1
4			1
3	BEARING BOX END PLATE	AS093000C	1
2	LOWER VENTURI	AS103036DCI	1
1	SHAFT	S06305220C	1
ITEM #	DESCRIPTION	MWI PART # DRAWING #	QTY.

BILL OF MATERIALS